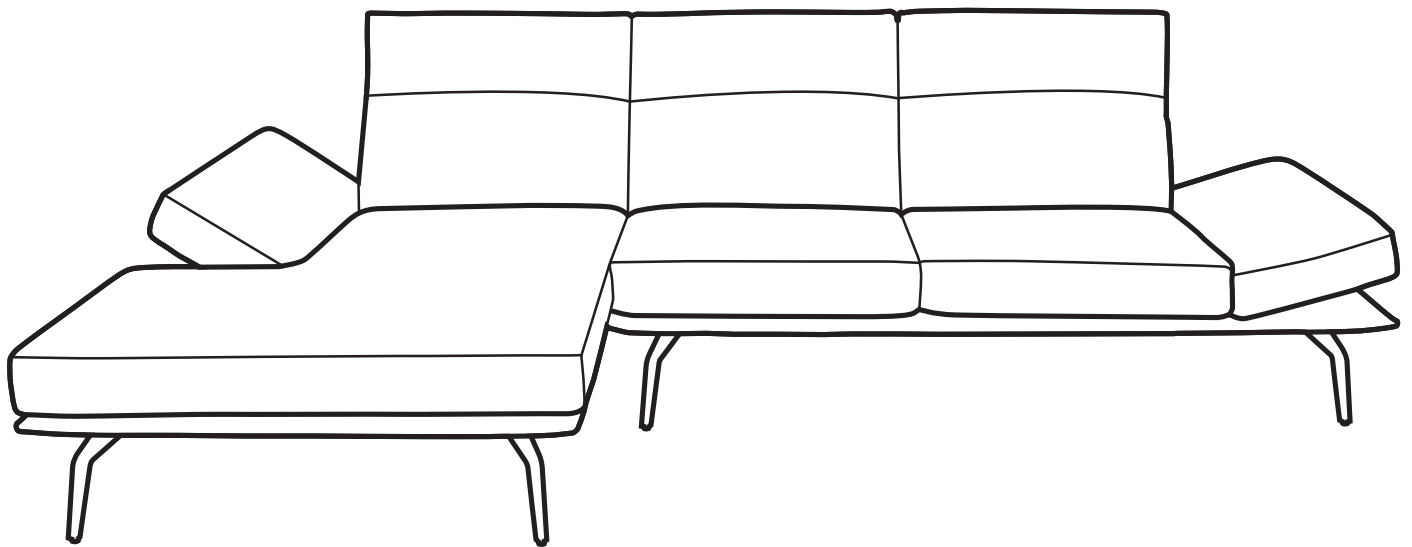
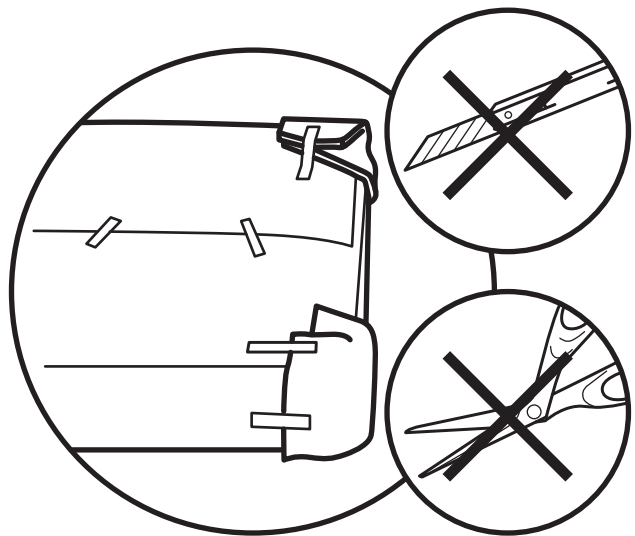
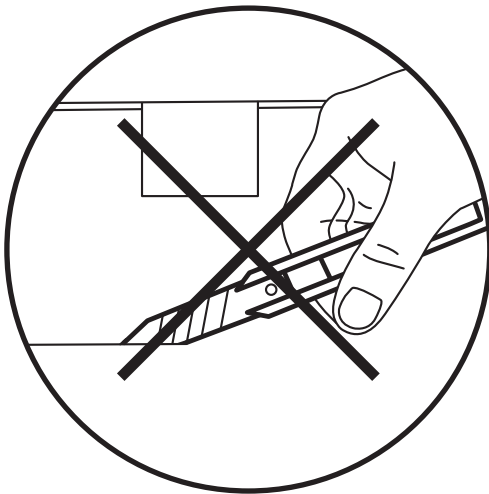
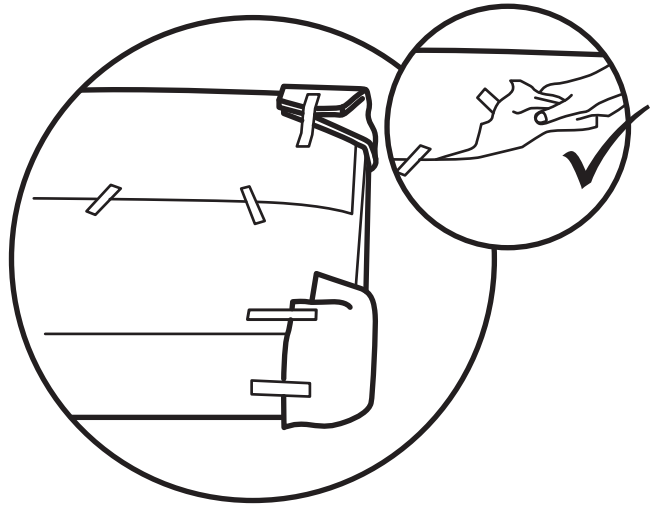
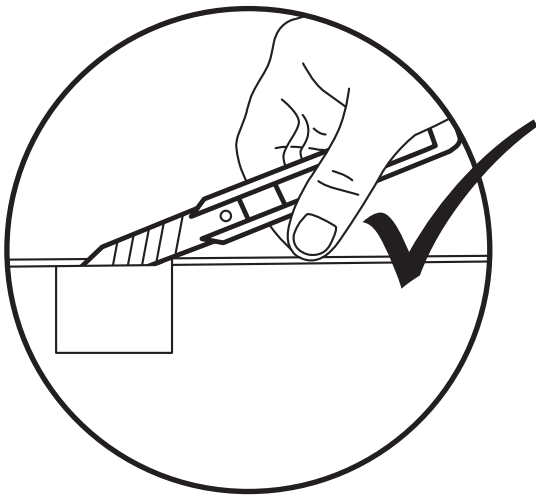


# A231

MONTAGEANLEITUNG / ASSEMBLY INSTRUCTION



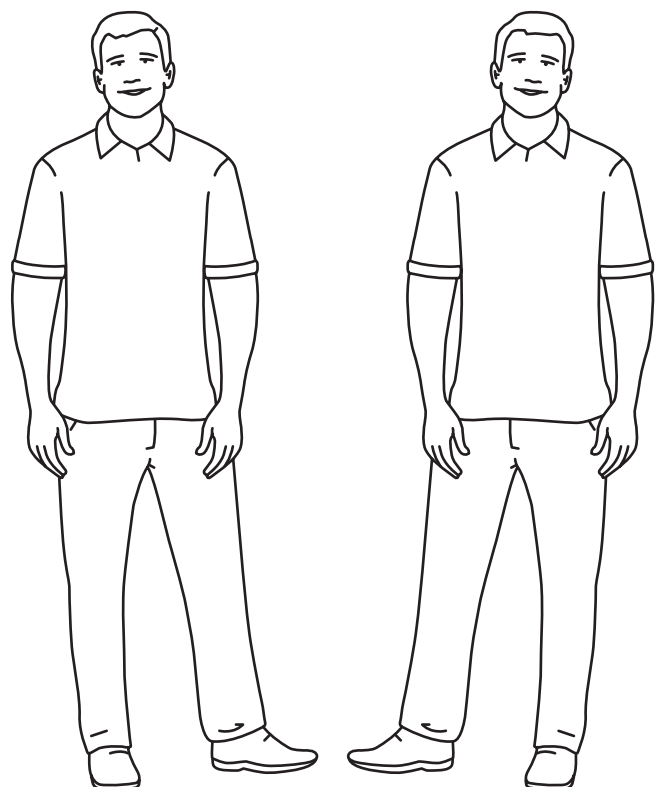




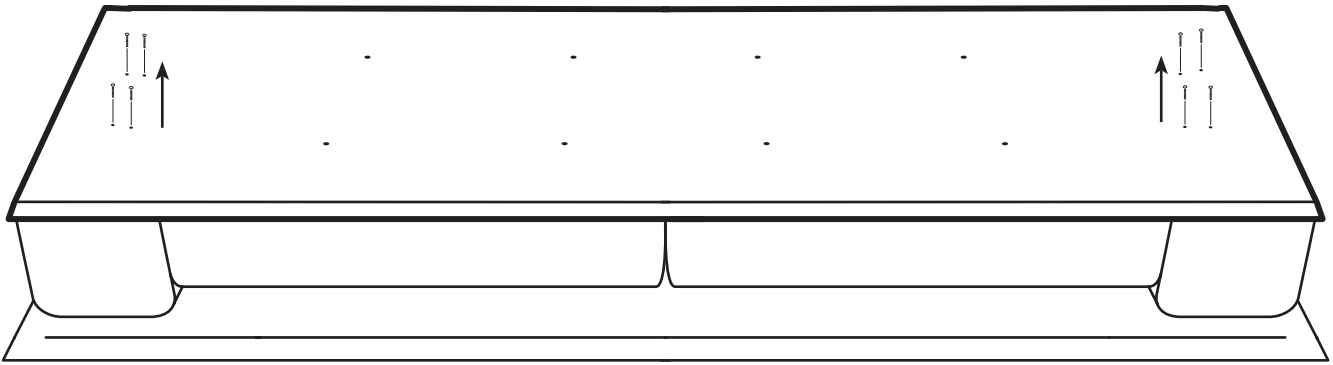
**! Hinweis / Note:**

Für den Aufbau werden zwei Monteure benötigt. Somit vermeiden Sie vorsorglich Beschädigungen.

*Two persons are needed for the assembly. This prevents damage in advance.*



**1** Vorbereitung Montage FüÙe / *Preparation assembly feet*

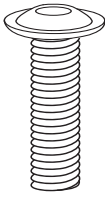


**2** Montage FüÙe / *Assembly feet*

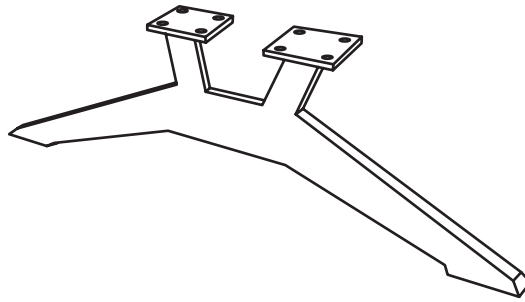
Montage Schwertkufe / *Assembly sword skid*



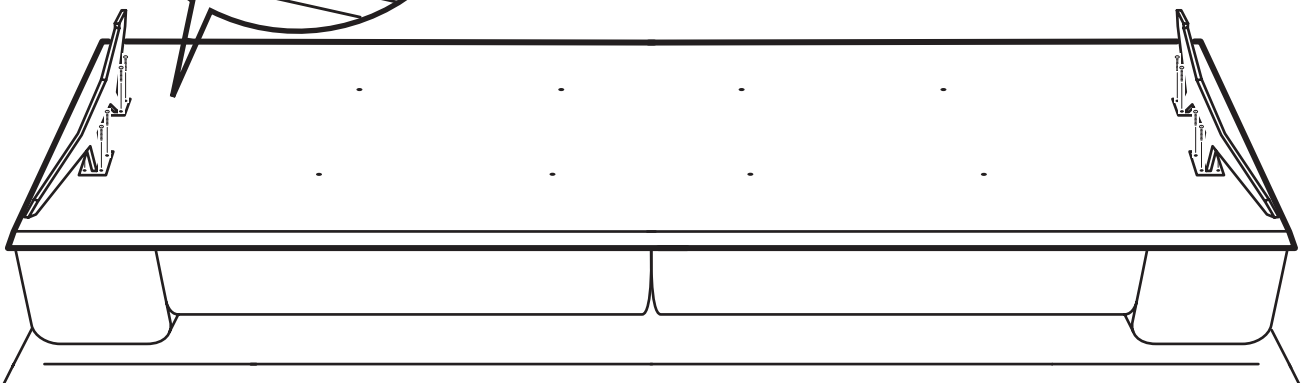
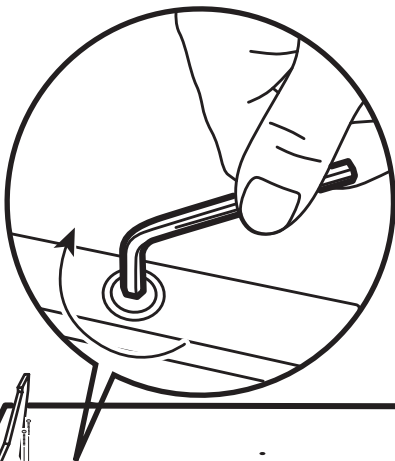
Inbusschlüssel 4 mm  
Allen key 4 mm



Flanschkopfschraube 6x35 mm  
Flange head screw 6x35 mm



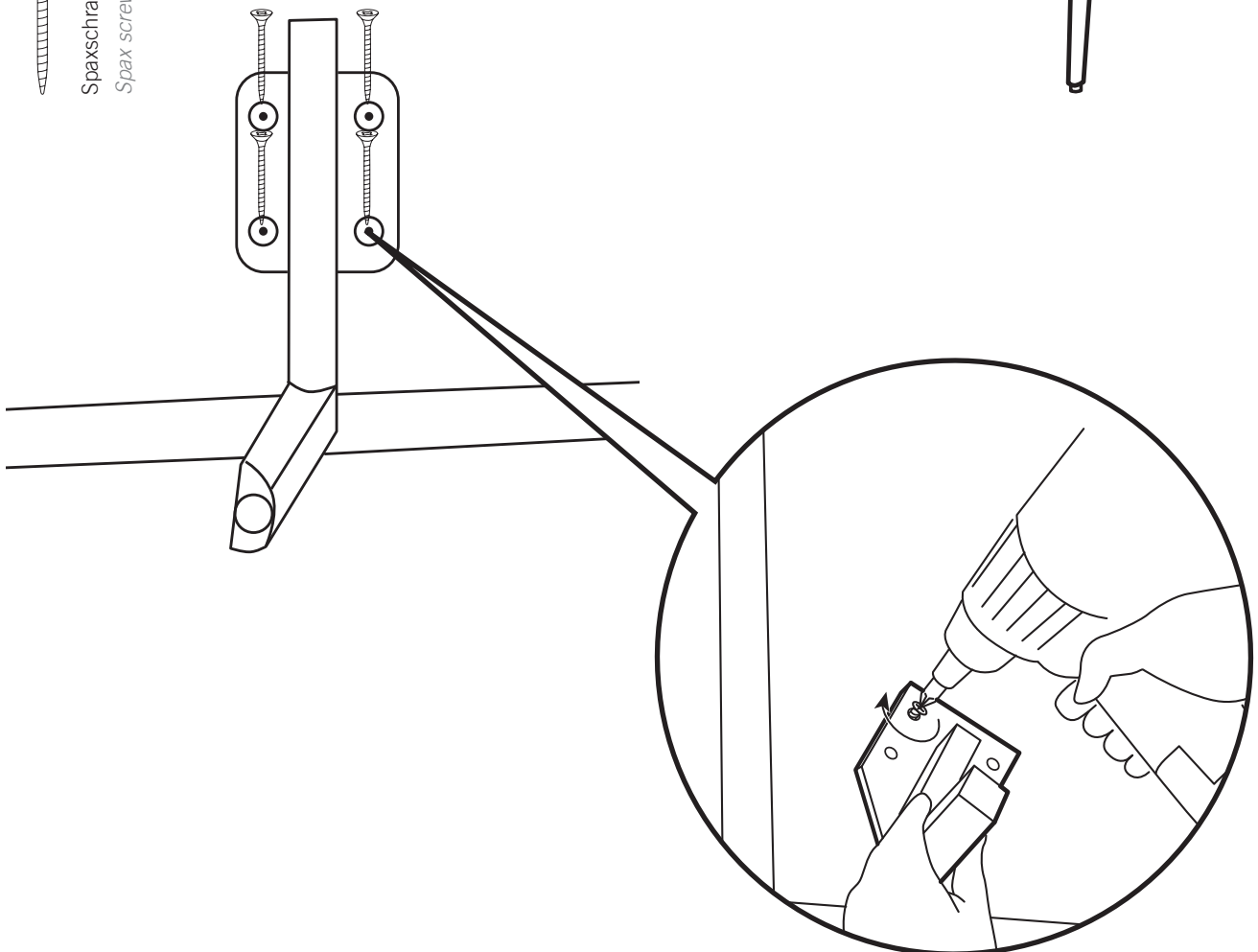
Schwertkufe 750x230 mm  
Sword skid 750x230 mm



Montage Winkelfuß / Assembly angled leg



Spaxschraube 6x35 mm  
Spax screw 6x35 mm

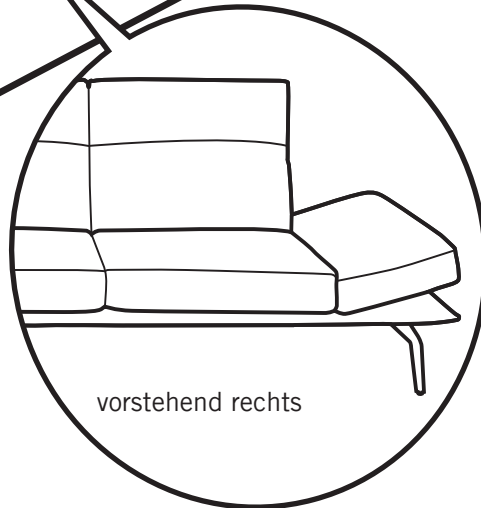
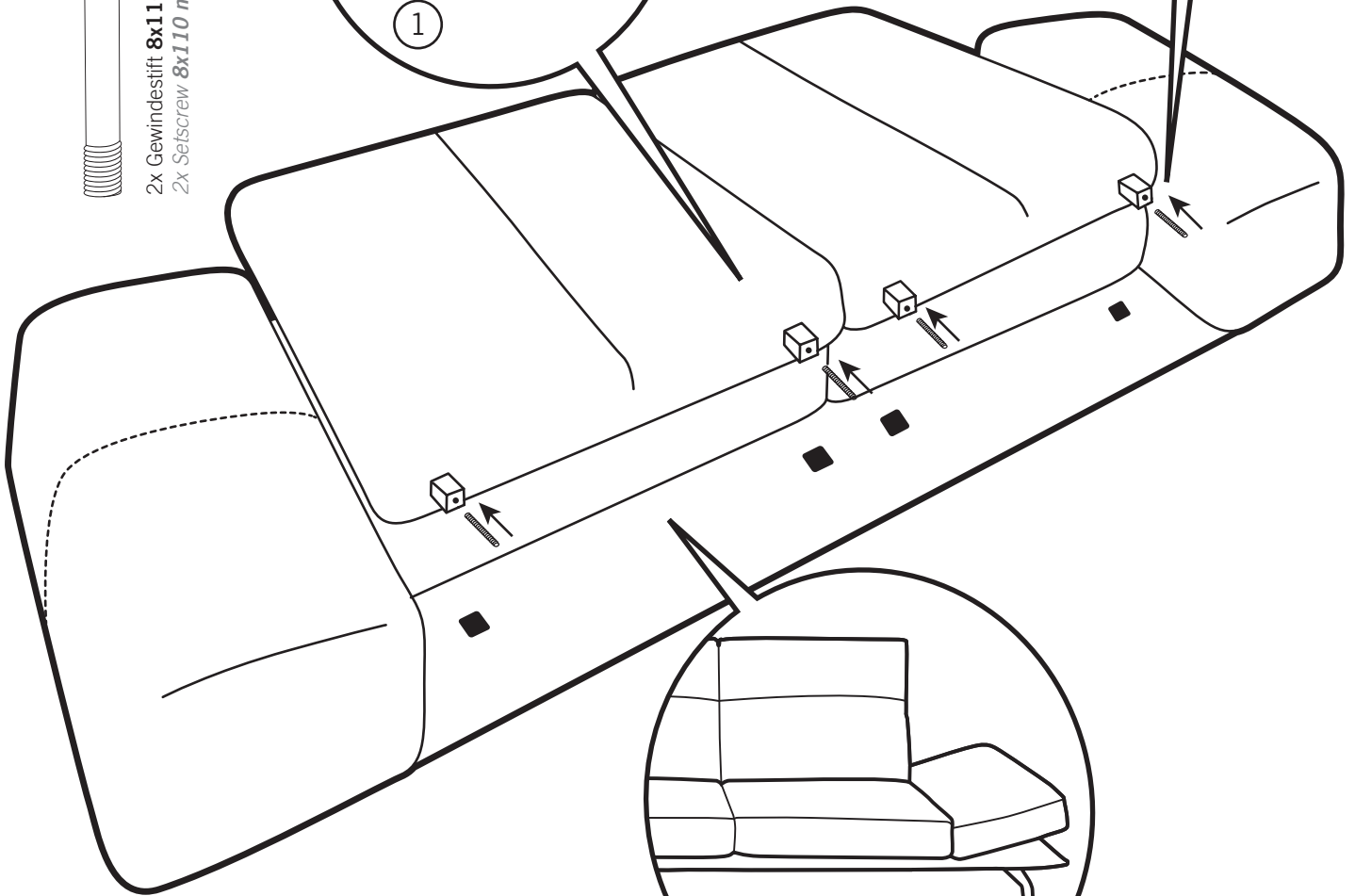
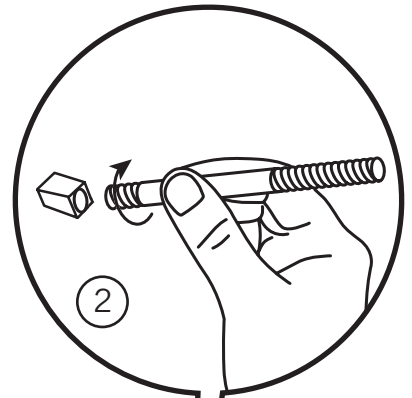
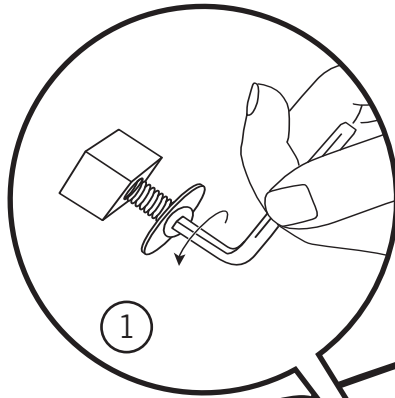


3

Montage Rücken / Assembly back



2x Gewindestift 8x110 mm (Montagehilfe)  
2x Setscrew 8x110 mm (assembly aid)

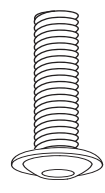


vorstehend rechts

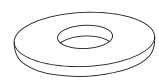
4



Inbusschlüssel 5 mm  
Allen key 5 mm



Flanschkopfschraube 8x30 mm  
Flange head screw 8x30 mm



U-Scheibe 10,5 mm  
Plain washer 10,5 mm

